

No. 9199 Afzelia

Celebrating the beauty of nature, capturing the essence of its diverse forms.

The Afzelia tree transforms into fabric with its sophisticated motifs and unique charm. Aligned with landscape, the pattern echoes nature's art and composes the pure beauty into every thread. The textile embraces a soft and gentle touch, while subtle haku accents hidden within the fabric infuse with refined elegance. With HOSOO's delicate weaving technique and interpretation, every life's whisper is woven into each thread, evoking woodland wonder in each fabric.

Created in collaboration with multifaceted studio AMDL CIRCLE, founded by Michele de Lucchi, the collection is available in five chromatic variations reminiscent of warm earthy tones embracing the timeless harmony of nature.

Spec

No. 9199 TYPE: A
Repeat: W 28.5cm x H 36.7cm
Pattern: Afzelia
Color: Earth Brown
Width: 147 cm
Effective Width: 139 cm
Weight: 386 g/m²
Content:
36% Cotton, 24% Silk, 16% Hemp,
12% Rayon, 7% Nylon, 3% Washi +
Silver, 7% Polyester



No. 9200 Afzelia

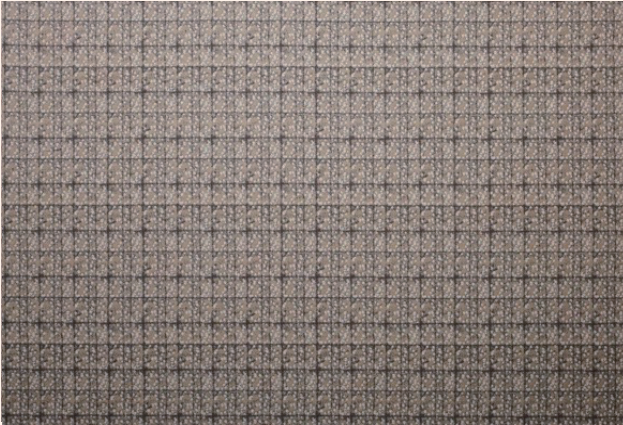
Celebrating the beauty of nature, capturing the essence of its diverse forms.

The Afzelia tree transforms into fabric with its sophisticated motifs and unique charm. Aligned with landscape, the pattern echoes nature's art and composes the pure beauty into every thread. The textile embraces a soft and gentle touch, while subtle haku accents hidden within the fabric infuse with refined elegance. With HOSOO's delicate weaving technique and interpretation, every life's whisper is woven into each thread, evoking woodland wonder in each fabric.

Created in collaboration with multifaceted studio AMDL CIRCLE, founded by Michele de Lucchi, the collection is available in five chromatic variations reminiscent of warm earthy tones embracing the timeless harmony of nature.

Spec

No. 9200 TYPE: A
Repeat: W 28.6cm x H 36.7cm
Pattern: Afzelia
Color: Light Earth Brown
Width: 147 cm
Effective Width: 139 cm
Weight: 369 g/m²
Content:
57% Cotton, 23% Silk, 16% Hemp,
2% Washi + Silver, 2% Polyester



No. 9201 Afzelia

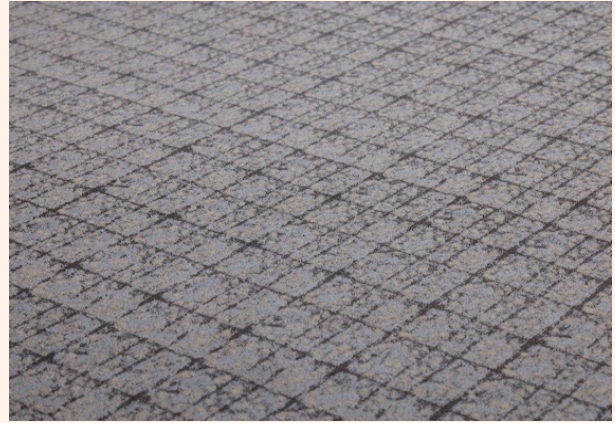
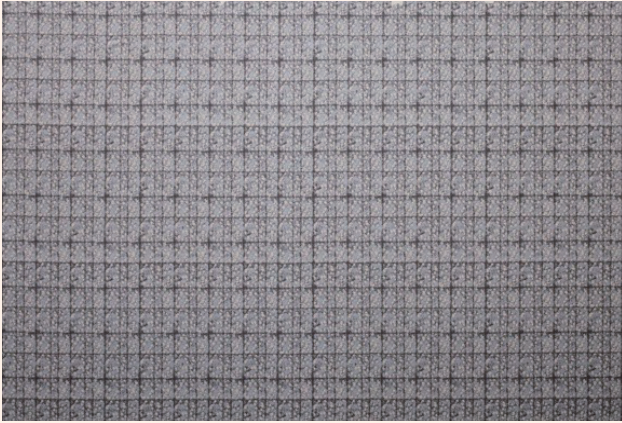
Celebrating the beauty of nature, capturing the essence of its diverse forms.

The Afzelia tree transforms into fabric with its sophisticated motifs and unique charm. Aligned with landscape, the pattern echoes nature's art and composes the pure beauty into every thread. The textile embraces a soft and gentle touch, while subtle haku accents hidden within the fabric infuse with refined elegance. With HOSOO's delicate weaving technique and interpretation, every life's whisper is woven into each thread, evoking woodland wonder in each fabric.

Created in collaboration with multifaceted studio AMDL CIRCLE, founded by Michele de Lucchi, the collection is available in five chromatic variations reminiscent of warm earthy tones embracing the timeless harmony of nature.

Spec

No. 9201 TYPE: A
Repeat: W 28.7cm x H 36.7cm
Pattern: Afzelia
Color: Light Ocher
Width: 148 cm
Effective Width: 140 cm
Weight: 386 g/m²
Content:
36% Cotton, 24% Silk, 16% Hemp,
12% Rayon, 7% Nylon, 3% Washi +
Silver, 2% Polyester



No. 9202 Afzelia

Celebrating the beauty of nature, capturing the essence of its diverse forms.

The Afzelia tree transforms into fabric with its sophisticated motifs and unique charm. Aligned with landscape, the pattern echoes nature's art and composes the pure beauty into every thread. The textile embraces a soft and gentle touch, while subtle haku accents hidden within the fabric infuse with refined elegance. With HOSOO's delicate weaving technique and interpretation, every life's whisper is woven into each thread, evoking woodland wonder in each fabric.

Created in collaboration with multifaceted studio AMDL CIRCLE, founded by Michele de Lucchi, the collection is available in five chromatic variations reminiscent of warm earthy tones embracing the timeless harmony of nature.

Spec

No. 9202

TYPE: A

Repeat: W 28.3cm x H 36.7cm

Pattern: Afzelia

Color: Ocean Blue

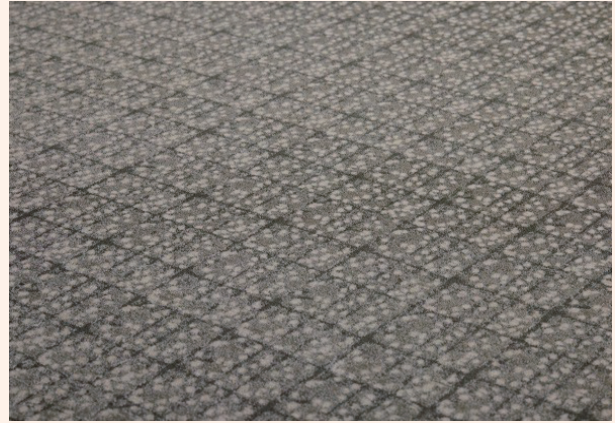
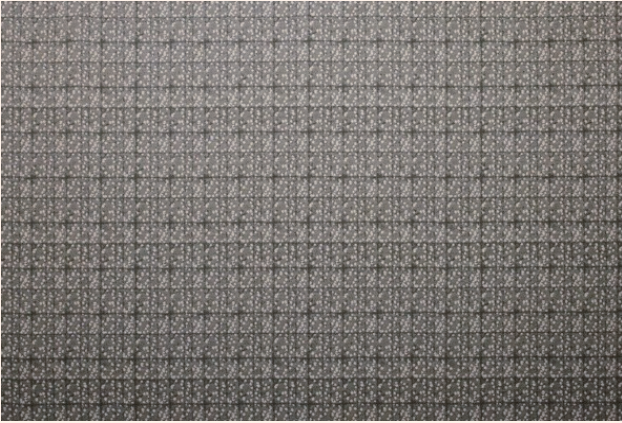
Width: 148 cm

Effective Width: 140 cm

Weight: 386 g/m²

Content:

36% Cotton, 24% Silk, 16% Hemp,
12% Rayon, 7% Nylon, 3% Washi +
Silver, 2% Polyester



No. 9203 Afzelia

Celebrating the beauty of nature, capturing the essence of its diverse forms.

The Afzelia tree transforms into fabric with its sophisticated motifs and unique charm. Aligned with landscape, the pattern echoes nature's art and composes the pure beauty into every thread. The textile embraces a soft and gentle touch, while subtle haku accents hidden within the fabric infuse with refined elegance. With HOSOO's delicate weaving technique and interpretation, every life's whisper is woven into each thread, evoking woodland wonder in each fabric.

Created in collaboration with multifaceted studio AMDL CIRCLE, founded by Michele de Lucchi, the collection is available in five chromatic variations reminiscent of warm earthy tones embracing the timeless harmony of nature.

Spec

No. 9203 TYPE: A
Repeat: W 28.3cm x H 36.7cm
Pattern: Afzelia
Color: Forest Green
Width: 147 cm
Effective Width: 139 cm
Weight: 386 g/m²
Content:
36% Cotton, 24% Silk, 16% Hemp,
12% Rayon, 7% Nylon, 3% Washi +
Silver, 2% Polyester



No. 9204 Red Oak

Celebrating the beauty of nature, capturing the essence of its diverse forms.

The collection unfolds the stories and memories of the ever-standing Red Oak. The labyrinth of patterns within each weave and grain echoes a harmonious dialogue of timeless elegance. The weft threads are prominently displayed, showcasing the unique texture of each yarn in the design, allowing for diverse expressions and adding depth and variety to each creation. With HOSOO's delicate weaving technique and interpretation, every life's whisper is woven into each thread, evoking woodland wonder in each fabric.

Created in collaboration with multifaceted studio AMDL CIRCLE, founded by Michele de Lucchi, the collection is available in four chromatic variations reminiscent of warm earthy tones embracing the timeless harmony of nature.

Spec

No. 9204 TYPE: B
Repeat: W 29cm x H 37.2cm
Pattern: Red Oak
Color: Earth Brown
Width: 149 cm
Effective Width: 141 cm
Weight: 313 g/m²
Content:
31% Rayon, 29% Silk, 21% Cotton,
19% Hemp



No. 9205 Red Oak

Celebrating the beauty of nature, capturing the essence of its diverse forms.

The collection unfolds the stories and memories of the ever-standing Red Oak. The labyrinth of patterns within each weave and grain echoes a harmonious dialogue of timeless elegance. The weft threads are prominently displayed, showcasing the unique texture of each yarn in the design, allowing for diverse expressions and adding depth and variety to each creation. With HOSOO's delicate weaving technique and interpretation, every life's whisper is woven into each thread, evoking woodland wonder in each fabric.

Created in collaboration with multifaceted studio AMDL CIRCLE, founded by Michele de Lucchi, the collection is available in four chromatic variations reminiscent of warm earthy tones embracing the timeless harmony of nature.

Spec

No. 9205 TYPE: B
Repeat: W 29cm x H 37.2cm
Pattern: Red Oak
Color: Ocher
Width: 149 cm
Effective Width: 141 cm
Weight: 313 g/m²
Content:
31% Rayon, 29% Silk, 21% Cotton,
19% Hemp



No. 9206 Red Oak

Celebrating the beauty of nature, capturing the essence of its diverse forms.

The collection unfolds the stories and memories of the ever-standing Red Oak. The labyrinth of patterns within each weave and grain echoes a harmonious dialogue of timeless elegance. The weft threads are prominently displayed, showcasing the unique texture of each yarn in the design, allowing for diverse expressions and adding depth and variety to each creation. With HOSOO's delicate weaving technique and interpretation, every life's whisper is woven into each thread, evoking woodland wonder in each fabric.

Created in collaboration with multifaceted studio AMDL CIRCLE, founded by Michele de Lucchi, the collection is available in four chromatic variations reminiscent of warm earthy tones embracing the timeless harmony of nature.

Spec

No. 9206 TYPE: B
Repeat: W 29cm x H 37.2cm
Pattern: Red Oak
Color: Forest Green
Width: 149 cm
Effective Width: 141 cm
Weight: 313 g/m²
Content:
31% Rayon, 29% Silk, 21% Cotton,
19% Hemp



No. 9207 Red Oak

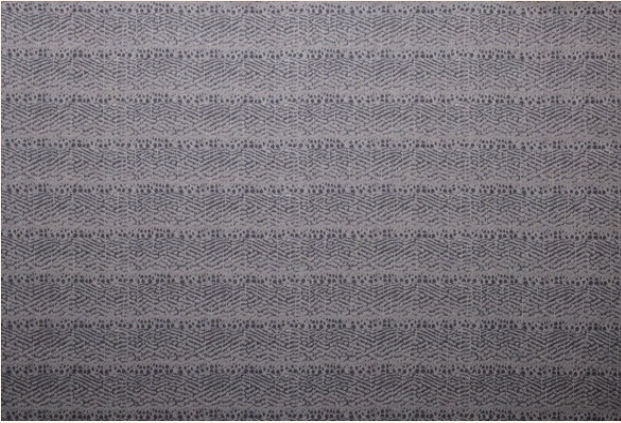
Celebrating the beauty of nature, capturing the essence of its diverse forms.

The collection unfolds the stories and memories of the ever-standing Red Oak. The labyrinth of patterns within each weave and grain echoes a harmonious dialogue of timeless elegance. The weft threads are prominently displayed, showcasing the unique texture of each yarn in the design, allowing for diverse expressions and adding depth and variety to each creation. With HOSOO's delicate weaving technique and interpretation, every life's whisper is woven into each thread, evoking woodland wonder in each fabric.

Created in collaboration with multifaceted studio AMDL CIRCLE, founded by Michele de Lucchi, the collection is available in four chromatic variations reminiscent of warm earthy tones embracing the timeless harmony of nature.

Spec

No. 9207 TYPE: B
Repeat: W 29cm x H 37.2cm
Pattern: Red Oak
Color: Light Ocher
Width: 149 cm
Effective Width: 141 cm
Weight: 313 g/m²
Content:
31% Rayon, 29% Silk, 21% Cotton,
19% Hemp



No. 9208 Red Elm

Celebrating the beauty of nature, capturing the essence of its diverse forms.

The collection is inspired by the heart of the forest, the Red Elm, with its symphony of patterns and dance of grace. The organic lines and curves intertwine, conveying the journey of time and beauty in nature. The vibrant contrast within the whimsical pattern, symphonized with HOSOO's intricate weave, breathes life into a three-dimensional canvas of fabric. With HOSOO's delicate weaving technique and interpretation, every life's whisper is woven into each thread, evoking woodland wonder in each fabric.

Created in collaboration with multifaceted studio AMDL CIRCLE, founded by Michele de Lucchi, the collection is available in four chromatic variations reminiscent of warm earthy tones embracing the timeless harmony of nature.

Spec

No. 9208 TYPE: B
Repeat: W 28.4cm x H 36.5cm
Pattern: Red Elm
Color: Stone Grey
Width: 146 cm
Effective Width: 138 cm
Weight: 275 g/m²
Content:
33% Silk, 23% Hemp, 17% Rayon,
17% Cotton, 10% Nylon



No. 9209 Red Elm

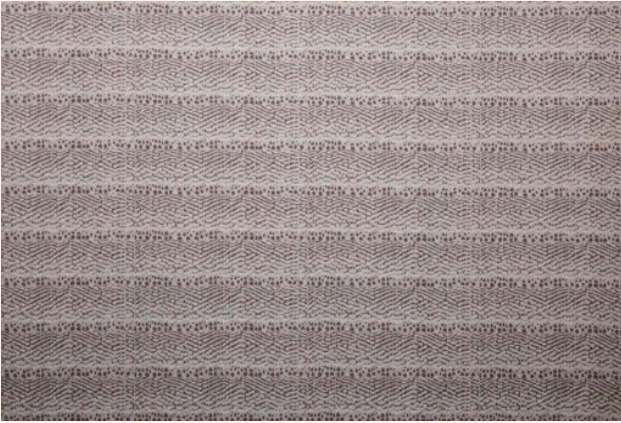
Celebrating the beauty of nature, capturing the essence of its diverse forms.

The collection is inspired by the heart of the forest, the Red Elm, with its symphony of patterns and dance of grace. The organic lines and curves intertwine, conveying the journey of time and beauty in nature. The vibrant contrast within the whimsical pattern, symphonized with HOSOO's intricate weave, breathes life into a three-dimensional canvas of fabric. With HOSOO's delicate weaving technique and interpretation, every life's whisper is woven into each thread, evoking woodland wonder in each fabric.

Created in collaboration with multifaceted studio AMDL CIRCLE, founded by Michele de Lucchi, the collection is available in four chromatic variations reminiscent of warm earthy tones embracing the timeless harmony of nature.

Spec

No. 9209 TYPE: B
Repeat: W 27.9cm x H 36.5cm
Pattern: Red Elm
Color: Ocher
Width: 146 cm
Effective Width: 138 cm
Weight: 304 g/m²
Content:
32% Rayon, 29% Silk, 21% Hemp,
18% Nylon



No. 9210 Red Elm

Celebrating the beauty of nature, capturing the essence of its diverse forms.

The collection is inspired by the heart of the forest, the Red Elm, with its symphony of patterns and dance of grace. The organic lines and curves intertwine, conveying the journey of time and beauty in nature. The vibrant contrast within the whimsical pattern, symphonized with HOSOO's intricate weave, breathes life into a three-dimensional canvas of fabric. With HOSOO's delicate weaving technique and interpretation, every life's whisper is woven into each thread, evoking woodland wonder in each fabric.

Created in collaboration with multifaceted studio AMDL CIRCLE, founded by Michele de Lucchi, the collection is available in four chromatic variations reminiscent of warm earthy tones embracing the timeless harmony of nature.

Spec

No. 9210 TYPE: B
Repeat: W 28.3cm x H 36.5cm
Pattern: Red Elm
Color: Light Earth Brown
Width: 148 cm
Effective Width: 140 cm
Weight: 400 g/m²
Content:
43% Linen, 22% Silk, 16% Hemp,
12% Rayon, 7% Nylon



No. 9211 Red Elm

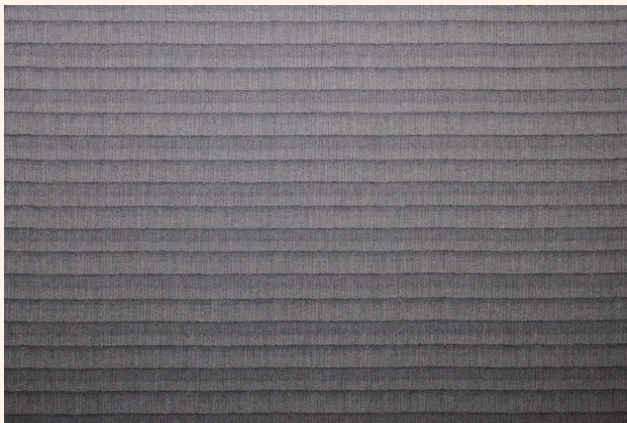
Celebrating the beauty of nature, capturing the essence of its diverse forms.

The collection is inspired by the heart of the forest, the Red Elm, with its symphony of patterns and dance of grace. The organic lines and curves intertwine, conveying the journey of time and beauty in nature. The vibrant contrast within the whimsical pattern, symphonized with HOSOO's intricate weave, breathes life into a three-dimensional canvas of fabric. With HOSOO's delicate weaving technique and interpretation, every life's whisper is woven into each thread, evoking woodland wonder in each fabric.

Created in collaboration with multifaceted studio AMDL CIRCLE, founded by Michele de Lucchi, the collection is available in four chromatic variations reminiscent of warm earthy tones embracing the timeless harmony of nature.

Spec

No. 9211 TYPE: B
Repeat: W 28.7cm x H 36.5cm
Pattern: Red Elm
Color: Forest Green
Width: 146 cm
Effective Width: 138 cm
Weight: 275 g/m²
Content:
33% Silk, 23% Hemp, 17% Rayon,
17% Cotton, 10% Nylon



No. 9212 Cedar

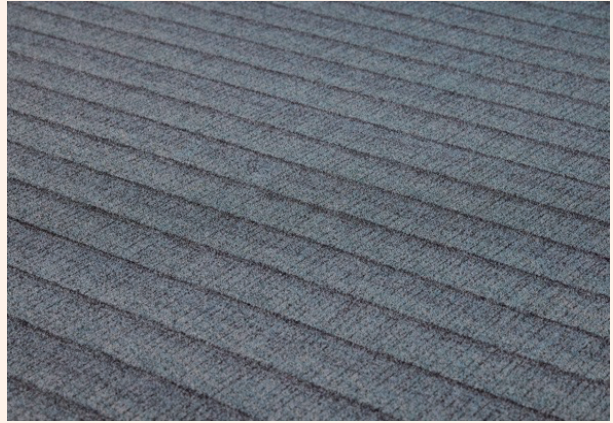
Celebrating the beauty of nature, capturing the essence of its diverse forms.

The collection captures the timeless quintessence of nature's art and embraces the sublime rhythm of the cedar tree. The vertical movements in the distinctive cedar tree pattern flow like nature's elegant brushstrokes, delicately woven in hemp with a refreshing touch, creating a tale of time infused with balance and elegance. With HOSOO's delicate weaving technique and interpretation, every life's whisper is woven into each thread, evoking woodland wonder in each fabric.

Created in collaboration with multifaceted studio AMDL CIRCLE, founded by Michele de Lucchi, the collection is available in four chromatic variations reminiscent of warm earthy tones embracing the timeless harmony of nature.

Spec

No. 9212	TYPE: B
Repeat: W 28.8cm x H 36.8cm	
Pattern: Cedar	
Color: Stone Grey	
Width: 147 cm	
Effective Width: 139 cm	
Weight: 280 g/m ²	
Content:	
32% Silk, 22% Hemp, 16% Rayon, 15% Cotton, 11% Nylon, 4% Polyester	



No. 9213 Cedar

Celebrating the beauty of nature, capturing the essence of its diverse forms.

The collection captures the timeless quintessence of nature's art and embraces the sublime rhythm of the cedar tree. The vertical movements in the distinctive cedar tree pattern flow like nature's elegant brushstrokes, delicately woven in hemp with a refreshing touch, creating a tale of time infused with balance and elegance. With HOSOO's delicate weaving technique and interpretation, every life's whisper is woven into each thread, evoking woodland wonder in each fabric.

Created in collaboration with multifaceted studio AMDL CIRCLE, founded by Michele de Lucchi, the collection is available in four chromatic variations reminiscent of warm earthy tones embracing the timeless harmony of nature.

Spec

No. 9213 TYPE: B
Repeat: W 29cm x H 36.8cm
Pattern: Cedar
Color: Ocean Blue
Width: 147 cm
Effective Width: 139 cm
Weight: 280 g/m²
Content:
32% Silk, 22% Hemp, 16% Rayon,
15% Cotton, 11% Nylon, 4%
Polyester



No. 9214 Cedar

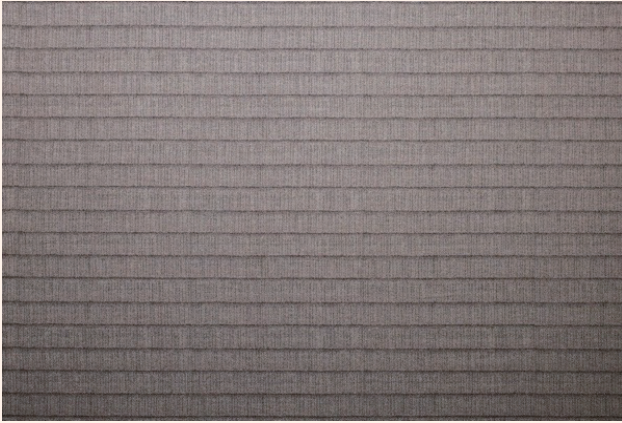
Celebrating the beauty of nature, capturing the essence of its diverse forms.

The collection captures the timeless quintessence of nature's art and embraces the sublime rhythm of the cedar tree. The vertical movements in the distinctive cedar tree pattern flow like nature's elegant brushstrokes, delicately woven in hemp with a refreshing touch, creating a tale of time infused with balance and elegance. With HOSOO's delicate weaving technique and interpretation, every life's whisper is woven into each thread, evoking woodland wonder in each fabric.

Created in collaboration with multifaceted studio AMDL CIRCLE, founded by Michele de Lucchi, the collection is available in four chromatic variations reminiscent of warm earthy tones embracing the timeless harmony of nature.

Spec

No. 9214 TYPE: B
Repeat: W 28.9cm x H 36.8cm
Pattern: Cedar
Color: Forest Green
Width: 147 cm
Effective Width: 139 cm
Weight: 280 g/m²
Content:
32% Silk, 22% Hemp, 16% Rayon,
15% Cotton, 11% Nylon, 4%
Polyester



No. 9215 Cedar

Celebrating the beauty of nature, capturing the essence of its diverse forms.

The collection captures the timeless quintessence of nature's art and embraces the sublime rhythm of the cedar tree. The vertical movements in the distinctive cedar tree pattern flow like nature's elegant brushstrokes, delicately woven in hemp with a refreshing touch, creating a tale of time infused with balance and elegance. With HOSOO's delicate weaving technique and interpretation, every life's whisper is woven into each thread, evoking woodland wonder in each fabric.

Created in collaboration with multifaceted studio AMDL CIRCLE, founded by Michele de Lucchi, the collection is available in four chromatic variations reminiscent of warm earthy tones embracing the timeless harmony of nature.

Spec

No. 9215 TYPE: B
Repeat: W 29cm x H 36.8cm
Pattern: Cedar
Color: Earth Brown
Width: 147 cm
Effective Width: 139 cm
Weight: 280 g/m²
Content:
32% Silk, 22% Hemp, 16% Rayon,
15% Cotton, 11% Nylon, 4%
Polyester